

# HAVEN



## 24 Summit Crescent Carrara QLD

4 3 2

Basking in northeasterly sun and delivering breathtaking panoramic views from Surfers Paradise to Burleigh Heads, this contemporary gem offers a superb design for family functionality and relaxed entertaining. With dual living potential, the home is set across two spectacular levels with multiple living/dining options and a choice of outdoor entertaining areas.

- Immaculately maintained hillside residence with dual living potential
- Rare 1045m2 block on sought after panoramic Summit Crescent
- Wrap around balcony showcases desired north easterly aspect and is ideal for entertaining
- Uninterrupted skyline views from Surfers Paradise to Burleigh Heads and Hinterland
- Modern kitchen with high end appliances, gas cooking

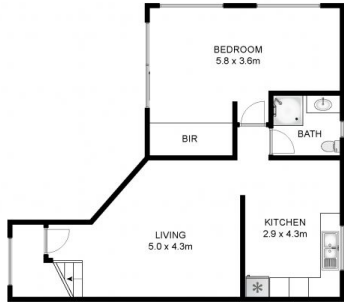
**Price** : \$ 842,000  
**Building Size** : 289 sqm  
**Land Size** : 1045 sqm  
**View** : <https://www.havenestateagents.com.au/sale/qld/gold-coast/carrara/residential/home/6188876>



**Carl English**  
0416 811 429



ENTRY LEVEL



LOWER LEVEL



SITE PLAN

Approx. Internal Area 289m<sup>2</sup>  
 Approx. Entertaining Area 90m<sup>2</sup>  
 Approx. Land Size 1045m<sup>2</sup>

Whilst [bwr.com.au](http://bwr.com.au) has made every attempt to ensure the accuracy of the floor plan contained here, measurements are approximate and no responsibility is taken for any error, omission, or mis-statement. This plan is for illustrative purposes only.



**24 Summit Crescent, Carrara**

**HAVEN**  
 ESTATE AGENTS