

# HAVEN



## 21 Mercure Place Highland Park QLD

4 🏠 2 🚗 2 🚗

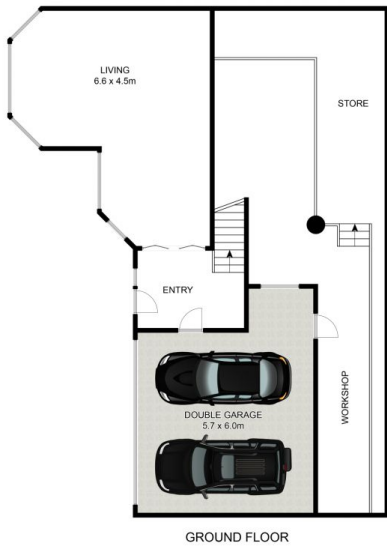
Undeniably spectacular with striking proportions, vast dual level living and entertaining zones, this residence offers an incredible use of space and flexibility guaranteed to impress all. Impeccably presented and flooded with natural light, it reveals a selection of formal and informal areas flowing to sun soaked alfresco deck space. Complete with dual living potential, it occupies an impressive elevated parcel in a peaceful and sought after cul-de-sac.

- Immaculately maintained hillside residence with dual living potential
- Positioned on 613m2 at the peak of sought after panoramic Mercure Place
- Sun soaked deck showcases desired easterly aspect and is ideal for entertaining
- Breathtaking skyline views from Surfers Paradise to Burleigh Heads

**Price** : \$ 710,000  
**Building Size** : 305 sqm  
**Land Size** : 613 sqm  
**View** : <https://www.havenestateagents.com.au/sale/qld/gold-coast/highland-park/residential/house/6188887>



**Carl English**  
0416 811 429



Approx. Internal Area 305m<sup>2</sup>  
 Approx. Land size Area 613m<sup>2</sup>

Whilst [bwrn.com.au](http://bwrn.com.au) has made every attempt to ensure the accuracy of the floor plan contained here, measurements are approximate and no responsibility is taken for any error, omission, or mis-statement. This plan is for illustrative purposes only.



## 21 Mercure Place, Highland Park

HAVEN  
 ESTATE AGENTS