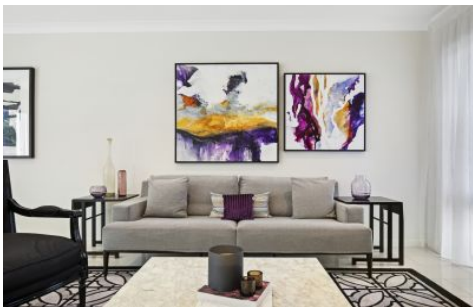


# HAVEN



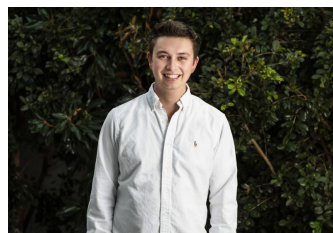
## 40 Hill Drive Pimpama QLD

3 2 1

Overlooking a vibrant landscaped central parkland within The Heights master planned community, this contemporary family terrace home enjoys easy access to the M1 and neighborhood shopping precincts. Every desirable element has been included, including open plan living spaces, three generous bedrooms, and superior fittings and finishes. The living area intimately connects with a private alfresco entertaining zone, overlooking a beautifully landscaped park. High ceilings and a soaring double-storey void at the entrance create an enhanced sense of space.

- \* Three spacious bedrooms, master with walk-in robe and ensuite
- \* Gourmet entertainer's kitchen complete with stone bench tops and mirrored splashback
- \* Stainless steel appliances including natural gas cooktop, electric oven, and dishwasher

**View :** <https://www.havenestateagents.com.au/lease/qld/gold-coast/pimpama/residential/townhouse/6346952>



**Bronson Burgoyne**  
0438 115 259